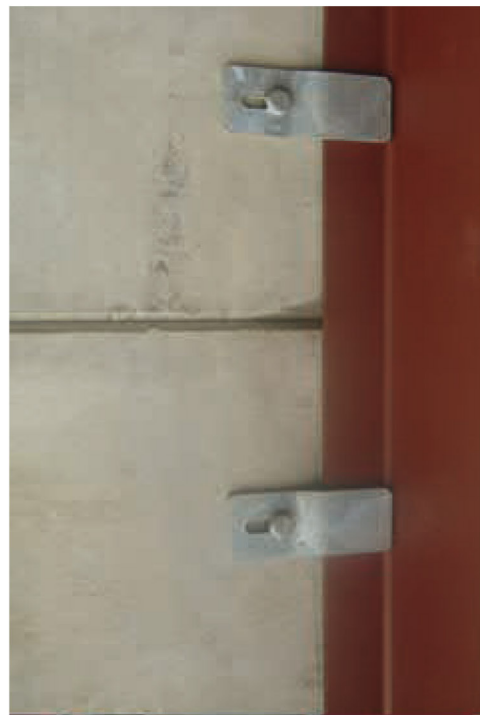


RETAINING WALLS

THIS IS YOUR ANSWER TO HEAVY DUTY WALL CONSTRUCTION

PRESTRESSED PANELS



Maxwell
Concrete

Maxwell Concrete
22 Folliard Road, Castlederg
Co Tyrone, BT81 7JW
T: 028 816 71326 F: 028 816 71736
Email: info@maxwellconcrete.co.uk

www.maxwellconcrete.co.uk

NEW PRODUCT! 600G MEGA TROUGH DESIGNED FOR THIRSTY COWS AND FARMERS

RETAINING WALLS

THIS IS YOUR ANSWER TO HEAVY DUTY WALL CONSTRUCTION

STORAGE BAYS

QUALITY:

- DESIGNED AND MANUFACTURED IN ACCORDANCE WITH BS 8110 AND BS 5502
- STRICT STRESSING ANALYSIS WITH ENGINEER SIGN OFF

DESIGN:

- EXTREMELY RESILIENT TO IMPACT FROM FARM EQUIPMENT DUE TO ITS FLEXIBLE PROPERTIES
- NO CONCRETE FOUNDATION IS REQUIRED AS A RESULT NON-DEPENDANT ON WEATHER CONDITIONS
- SMOOTH FINISH REDUCES PLASTERING COSTS AND PROVIDES EASY CLEANING OF WALLS
- COMBINES EXCELLENT THERMAL PROPERTIES, FIRE PROTECTION AND SOUND REDUCTION
- SPEED & EASE OF CONSTRUCTION MEANS PANELS CAN EASILY BE INSTALLED, REMOVED AND REBUILT BY CUSTOMERS IN THE FUTURE IF REQUIRED

FINISH:

- SMOOTH SURFACE FINISH MEANS THE WALLS WILL BE RESISTANT TO DIRT AND EASILY CLEANED

TECHNICAL:

- PANELS SUPPORTED BY STANCHIONS & INSTALLED HORIZONTALLY ACROSS THE BAY WIDTH, PLACED EITHER ON THE FACE OR BETWEEN THE WEBS OF THE STANCHIONS.
- PANELS ARE PRODUCED STANDARD 100MM (4") DEEP
- PANELS ARE PRODUCED STANDARD 150MM (6") DEEP
- PANELS ARE PRODUCED STANDARD 200MM (8") DEEP
- JOINTS MAY BE CLOSED USING BACKING ROD AND SEALANT

VANTAGE POINT:

- FAST ERECTION, FLEXIBLE PROPERTIES AND ECONOMICAL IN TERMS OF PRODUCT PURPOSE

DEPTH	LENGTH	HEIGHT (FT)	HEIGHT (MM)
150MM (6")	Dependent on density of stored material	4' + 5'	1200MM/1500MM
200MM (8")		4' + 5'	1200MM/1500MM

www.maxwellconcrete.co.uk